



Installation Guide

ATV Safety

Using J-wheelz on your ATV DOES NOT MAKE YOUR ATV SAFER!

Using J-wheelz on your ATV will make your vehicle wider. This increases the risk of running into permanent objects like rocks or trees. **USE CAUTION WHEN TRAVELING THROUGH AREAS WITH PERMANENT OBSTACLES.** J-wheelz increased width can cause additional feedback (or bucking) in the handlebars. **USE CAUTION WHEN RIDING IN RUTTED TERRAIN OR AT HIGH SPEEDS.**

ATVs are dangerous vehicles. Make sure you have read and understand all the safety information in your ATV Operators Manual.

Follow the Age recommendation for your ATV. Most ATV manufacturers suggest that **NO ONE** under the age of 16 operate an ATV.

Always wear a Helmet and other safety equipment when operating your ATV.

If you have any questions about ATV safety please contact your local authorized ATV dealer.

Floatation

We receive lots of questions about floatation with J-wheelz. J-wheelz do add floatation to your ATV and will most likely float the machine by itself, but **they were never intended to float the driver while operating the vehicle or to drive across deep water.** We recommend that you avoid deep water or crossing bodies of water with your ATV. ATVs do not have adequate safety equipment or floatation devices for deep water applications.

If you are still curious, here is some information to help you better understand floatation:

The amount of floatation or buoyancy produced by any object submersed in water is equal to the amount of water displaced by the object (This is known as Archimedes Principle). 1 cubic foot of water weighs roughly 62 pounds. Now for an example, if you wanted to have 1000 lbs of buoyancy. $1000/62 = 16.13$ cubic feet. So in order to achieve 1000 pounds of buoyancy in water you would need to displace roughly 16 cubic feet of water.

The average utility ATV tire displaces between 1.2 and 1.6 cubic feet per wheel which yields between 72 and 96 pounds of buoyancy per tire and between 298 and 397 pounds of buoyancy for all four tires.

A single J-wheelz attachment (including the floatation insert) displaces about 1.25 cubic feet. So a set of four J-wheelz adds 5 cubic feet of displacement or 310 pounds of buoyancy.

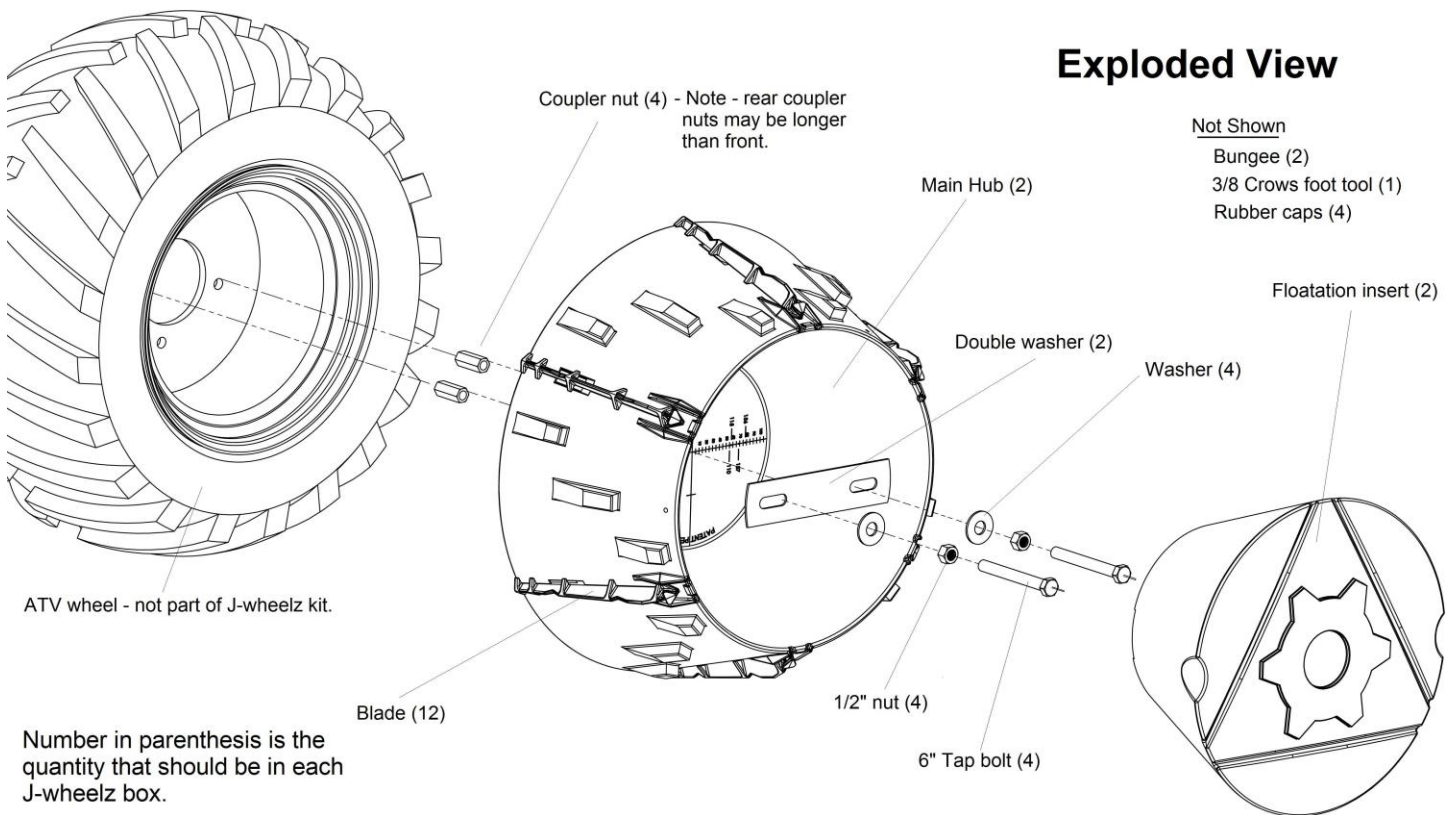
Another factor is that when an ATV is partially submersed in water, some of the metal and other components of the vehicle are displacing water as well. This is where it gets tricky. There is not a practical method to measure this amount of buoyancy. We have no idea what your machine weighs; therefore, we recommend you weigh your machine using a truck scale to determine its weight.

This is how we recommend you test floatation on your ATV with 4 J-wheelz installed:
 Find a warm body of water on a calm day that has a gradually sloping beach. Make certain there are no sudden drop offs or holes. **DO NOT drive your ATV into the water to test floatation and make certain someone is along to help you. DO NOT attempt this by yourself.** NEVER attempt this with large vehicles such as UTVs, side by sides or buggies.

1. Turn the engine off
2. Select the neutral gear
3. Slowly push the ATV into the water while one person walks along both sides of the vehicle until it begins to float.
4. If the top of the tires goes under water and the vehicle is not yet floating, **DO NOT PUSH THE VEHICLE ANY DEEPER.**
5. Take notice of the vehicle's air intake and exhaust relative to the waterline. You want sufficient clearance between these places and the waterline to prevent water from entering the engine.

If you want to increase the floatation of your ATV you can do many things such as adding coast guard approved foam to portions of the undercarriage. There are many variables to consider in the floatation game including the weight of the ATV, the weight of the rider, how much equipment is on the ATV and so on. Above everything else **BE SMART AND BE SAFE!**

B-Quick LTD does not guarantee floatation of your ATV and strongly recommends you avoid deep water or water crossings. **This information is intended to be for informational purposes only. It is not intended to be a step by step guide. You accept all risk of damage or injury if you engage in deep water or floatation activities.**



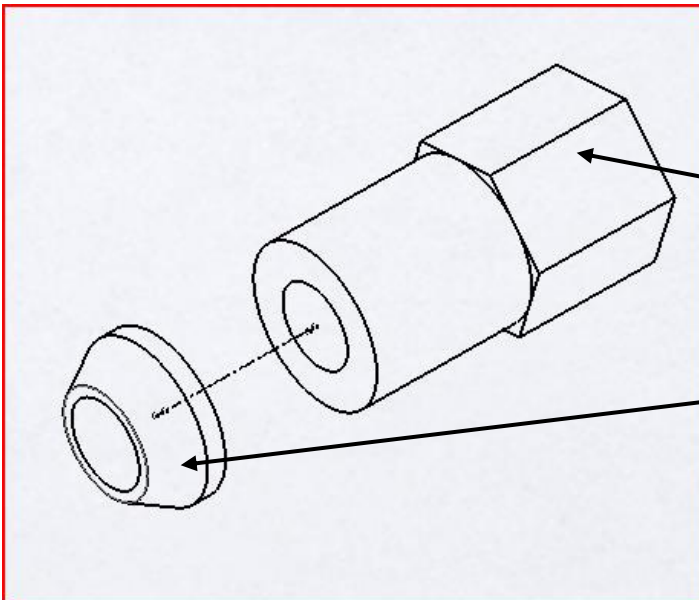
Installation Guide:

To install J-wheelz attachments on your vehicle, begin by parking the vehicle on a level surface and engaging the parking brake. (There is no need to jack the wheels off the ground)

On one wheel of the vehicle completely remove one of the lug nuts and replace it with the J-wheelz coupler nut. Tighten the coupler nut to the same specifications of your vehicles lug nuts.



The J-wheelz coupler nuts are designed to accommodate both flat and tapered rim styles. This coupler nut comes in either 10mm or 3/8" sizes, indicated by the packaging. Please ensure that the hardware you received matches the wheel studs of your machine. **Depending on your application, you may not need the jam nut.**



Coupler Nut: This coupler nut fits flat rim styles.

Jam Nut: Used in conjunction with coupler nut for tapered rim styles. Jam Nut is not threaded and simply slides onto wheel stud, followed by Coupler Nut. (*Jam Nut not needed for flat rim styles*)

Remove a 2nd lug nut directly opposite the one you just removed and replace it with a second J-wheelz coupler nut. **If you have deep well rear wheels on your vehicle, your kit may include longer coupler nuts for the rear wheels.** Check the size of all the coupler nuts in your kit before installing them.



Repeat the coupler nut installation procedure until you have installed two coupler nuts on each wheel you plan to attach J-wheelz to. Spray some lubricant in the threads of the coupler nuts or use grease, which will last longer.



Once the coupler nuts have been properly installed they may remain on the vehicle at all times. Simply use the included rubber caps to keep mud out of the threads of the coupler nuts when the J-wheelz are not installed.



Drilling for your ATV model

You need to measure and drill ½” holes on the marked scale of the hub for your particular vehicle. We recommend a ½” spade bit for the holes.

We encourage you to use the printed metric ruler (Figure 3) to verify the dimension of your bolt pattern in mm. To do this, measure from the center of one wheel stud to the center of the opposite wheel stud. Verify scale of print before proceeding.



Most of the common bolt patterns have been marked on the hub for you. For example if your bolt pattern dimension is 137mm then you would drill ½” holes on the scale at the two points marked 137. The common bolt patterns marked on the scale are 110mm, 115mm, 137mm, and 156mm.

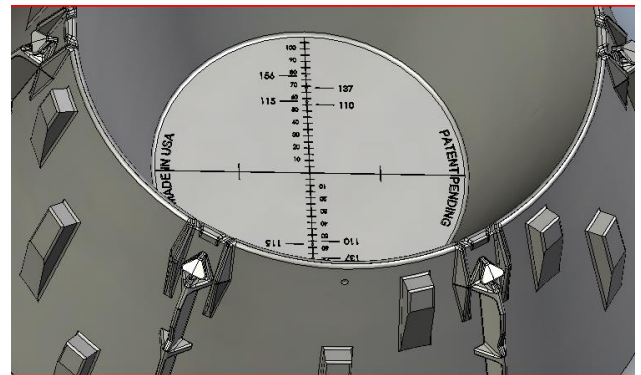
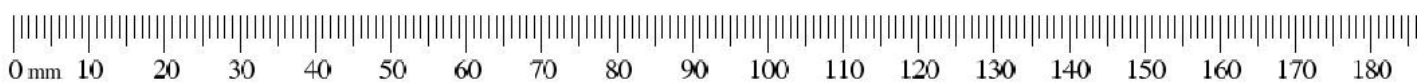
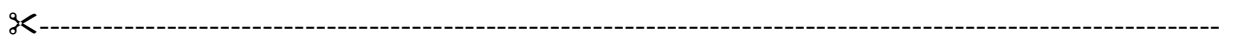


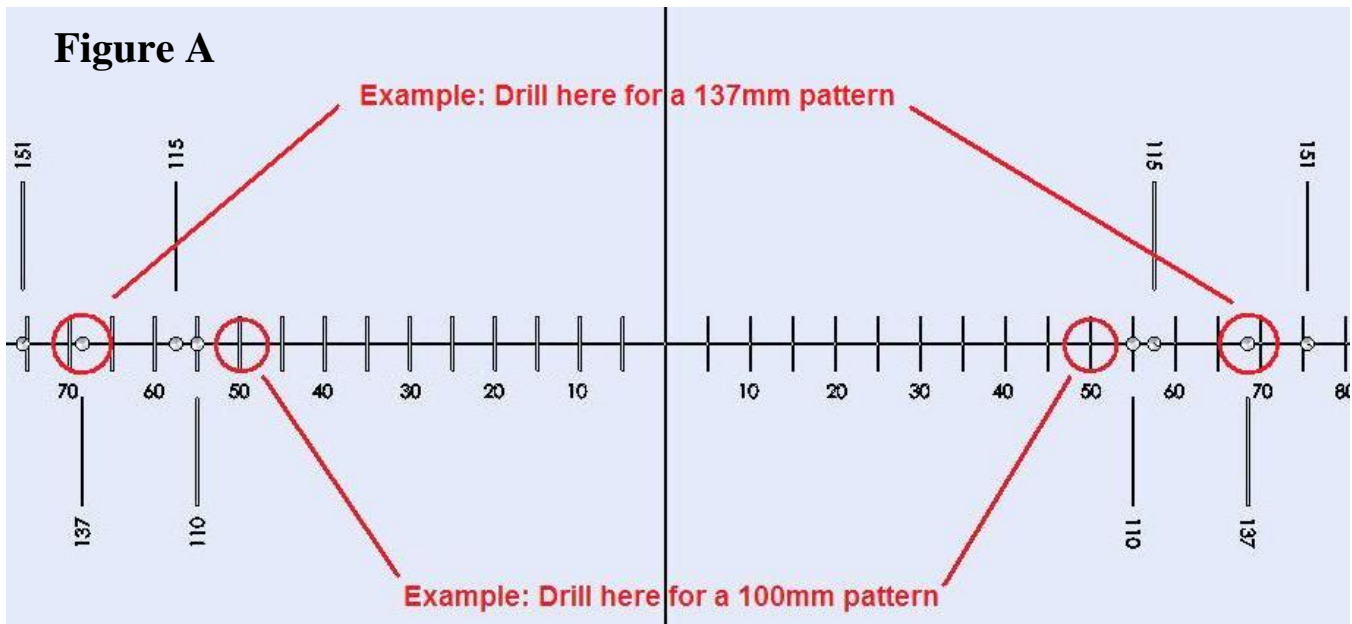
Figure 3



Drilling continued...

If your bolt pattern is not one of the common patterns (110, 115, 137 or 156) you will need to use the graduated scale that is printed on the face of the hub. Since you have measured the spacing of your wheel pattern, divide that number (in mm) by 2 and use this halved measurement to mark the scale on both sides of the centerline. (See below)

For example, your bolt pattern is 100mm. Divide 100mm by 2, which equals 50mm. Measure 50mm in each direction from the center of the scale using the numbers printed on the part and drill ½” holes in those locations for your bolt pattern. (see Figure A)



Now that you have found where to drill for your vehicle, use a ½” spade bit to drill completely through the plastic plate and foam at the two locations you determined above.



Bolting on the J-wheelz



Now that you have properly drilled your J-wheelz for your vehicle you can bolt on the attachments.

Start by threading one of the 1/2" nuts onto each of the tap bolts and add the washer as well.



Now take two of the bolt/nut/washer combinations and pass them through the slots on the double washer.



Insert the bolt/nut/washer/double washer combination through the drilled holes in the main hub. Make certain that the flanges on the double washer face out toward you. (Flat side against the J-wheelz hub).



The bolts should be long enough to thread them one at a time into the coupler nuts previously installed on the wheels.



Once the bolts have been hand tightened into the coupler nuts, use the express installation tool, or a 3/4" socket to firmly tighten them.



Next hand-turn the nuts to tighten the J-wheelz attachment against the wheel.



Use the express installation tool along with a cordless drill (*not included*) to tighten the attachment nuts. It is important to alternate tightening between the two nuts as you tighten. Make sure both nuts are equally tight when you are done. It is highly unlikely to damage J-wheelz by over-tightening so make sure they are tight.



NOTE: IT IS VERY IMPORTANT THAT THE J-WHEELZ ATTACHMENTS ARE ADEQUATELY TIGHTENED AGAINST THE WHEEL. UNDER TIGHTENING J-WHEELZ MAY CAUSE THE BOLTS TO BEND!

You can also use the installation tool manually by inserting a rod or tool through the hole at the top of the tool and turning it by hand.





In the absence of the installation tool you may use a 3/8" ratchet and long extension to attach or remove J-wheelz.

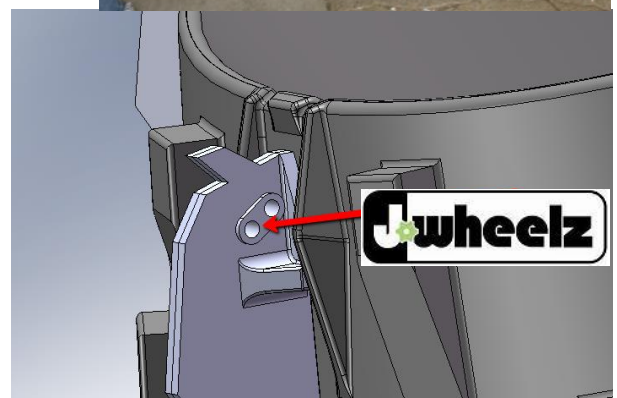
Repeat the above procedures fully tightening all the J-wheelz attachments to the wheels.



Safety Note: After the initial installation, ride your vehicle for 20 minutes and recheck the bolt tightness. Repeat this 2 or 3 times to make sure everything is tight after any possible shifting. It is important to check the tightness of these nuts and the tap bolts each time before operating the vehicle.



Once you have tightened the attachment to the wheel check the installation by placing your knee on the outer edge and pressing down. If properly tightened the J-wheelz attachment should not pull away from the tire or move independently from the tire. If either of these conditions occur when testing, simply tighten the attachment nuts further.



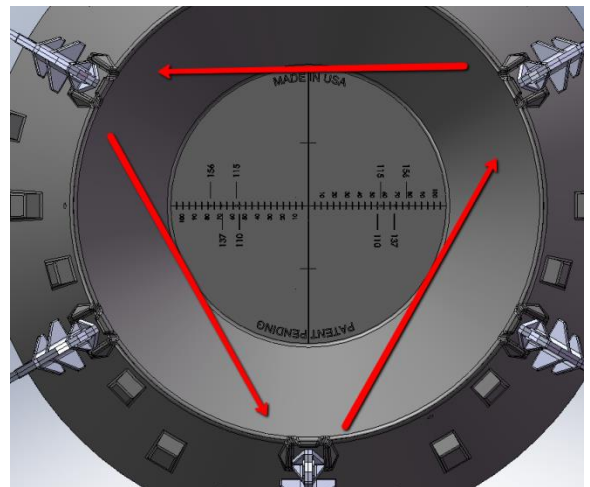
Your J-wheelz kit includes our newest traction blade system.

To use this setup, start by threading one end of one of the included bungee cords through one of the holes in the traction blade.

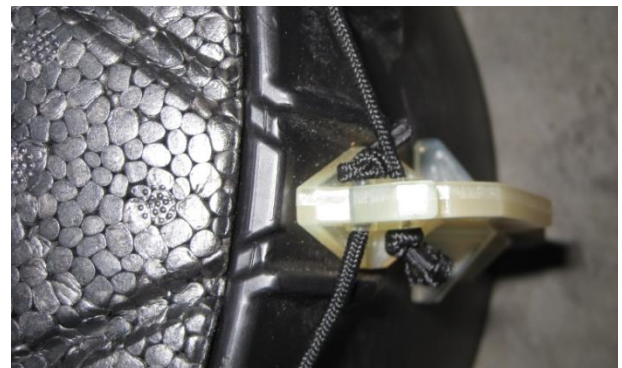
Once threaded through the hole, tie any kind of simple knot on one end of the cord like shown here.



Now thread the bungee cord through 2 other blades in a triangular pattern like the one shown here. You should end up back where you initially tied the first knot.



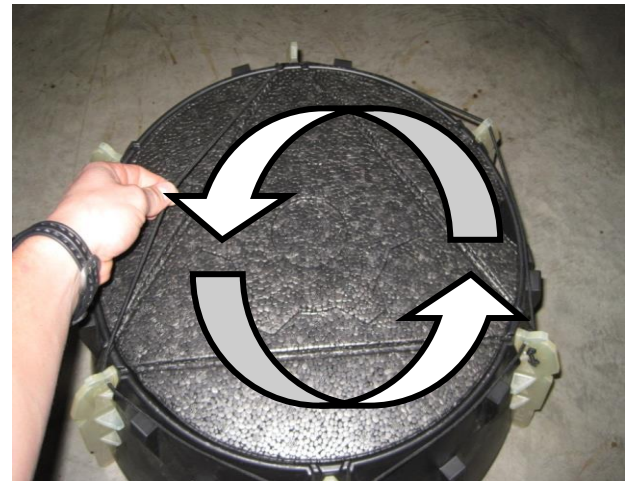
Finally thread the bungee through the 2nd hole on the traction blade you started with and tie a second knot. Trim the excess on both cords if needed.



The purpose of the pointed nose on the traction blades is to hold the bungee cord out of the way while installing or removing the floatation insert. You will need to do this at all three points on the traction blades to completely hold the cord out of the way while installing the floatation insert.



Please note that with this setup, the floatation insert will only align properly with the bungee cord one way. You may have to rotate the insert 180 degrees to get proper alignment.



Congratulations! You have successfully installed your J-wheelz! Enjoy the increased performance of your ATV but above all please...

Remember to have fun and BE SAFE!



J-wheelz 90 Day Limited Warranty

By purchasing the J-wheelz product customer acknowledges and agrees to all terms and conditions set forth in this Limited Warranty.

What is covered by this Limited Warranty? B-Quick LTD (the “Company”) warrants to the original customer only, that all J-wheelz components and hardware comprising the product will be free from defects in materials and workmanship for a period of 90 days from the date of purchase of the product by customer (the “Term”). The product includes the coupler nuts, ½” bolts, ½” nuts, double washer, double frustum, floatation insert, bungee cord, and foam core of the double frustum (each component of the product is identified in the parts diagram of the J-wheelz Owner’s Manual). This warranty does not include the crow’s foot tool included with the installation package.

What is not covered by this Limited Warranty? This Limited Warranty does not cover and Company is not responsible for: (i) cosmetic damage or damage that does not hinder the functionality of the product; (ii) wear and tear to the product resulting from normal use; (iii) loss or theft of the product or any of its components; (iv) damage caused by improper installation or improper use of the product; (v) fading or color loss of the product due to exposure to natural environmental conditions; (vi) damage cause by improper maintenance of the product; (vii) damage due to use of any parts or components not supplied by Company; and (viii) any equipment, components, parts, or accessories that were not included in the product when originally sold to customer.

What must you do to obtain warranty services under this Limited Warranty? To obtain service pursuant to this Limited Warranty, customer must: (i) abide by Company’s warranty service process; (ii) assist Company in identifying the problems with the product; and (iii) obtain warranty services only from Company or another Company authorized service provider or dealer. In order to keep this Limited Warranty in effect for the entirety of the Term, customer must: (i) follow all product installation and removal procedures; (ii) use only parts and components provided by Company as the use of components not provided by Company will void this warranty; and (iii) follow the guidelines for acceptable use of the product (as contained in the J-wheelz Owner’s Manual).

What is the period of coverage of this Limited Warranty? This Limited Warranty covers the product for a period of 90 days from the date of purchase. The Term begins to run from the date of purchase regardless of delay in receipt of the product by customer due to time required for order processing, handling, shipping, or otherwise. Customer must retain proof of the date of purchase of the product.

What will be done under this Limited Warranty to correct a problem with the product? If during the Term the product is not free from defects in materials and workmanship, Company will, at its sole option: (i) repair the product; (ii) replace it with a comparable product, or (iii) refund the purchase price paid for the product. Company may take any other repair or corrective measures it deems necessary in its sole discretion. Replacement parts and products will be warranted for the remainder of the Term. If Company repairs or replaces the product, the term of this Limited Warranty is not extended beyond the original Term.

Where can you receive warranty services under this Limited Warranty? Warranty services under this Limited Warranty may be received from the Company or from the dealership where customer purchased the product. In order to receive warranty services, customer must bring or deliver to the Company or the dealership

the product, all components, and all items required by paragraph 11, below. If customer did not purchase the product from a local dealer or customer is having issues contacting customer's local dealer, Company can be contacted directly at: B-Quick LTD PO Box 947, Aberdeen, South Dakota 57401, Phone: (605) 277-6658, E-Mail: info@j-wheelz.com, to obtain warranty services under this Limited Warranty.

Can you keep the defective product or parts? No. Company will own all parts removed from the repaired product. Company will retain as its property all replaced components and the product.

Who is responsible for delivery or shipment of defective products to receive warranty services under this Limited Warranty? In order to receive warranty services under this Limited Warranty, customer must ship or deliver to Company or the selling dealer the product, prepay shipping charges for shipping the product to Company or the selling dealer, and insure the shipment or accept the risk of loss or damage during shipment. Company will, at its expense, ship to customer the repaired product or replacement product in the continental United States of America. Shipping charges for shipments to locations outside of the continental United States are customer's responsibility and must be paid in advance of return shipment. All shipments in the continental United States of America by Company will be via a nationally recognized ground shipping service, or such other shipping service as determined by Company at the Company's sole discretion. If customer requires expedited shipping, customer is responsible for shipping charges in excess of standard ground service shipping charges.

What must you provide in order to get warranty services under this Limited Warranty? Questions regarding warranty service or requests for warranty service, under this Limited Warranty must be directed to Company at the contact information in paragraph 6, above. Please be aware when contacting Company by telephone that long distance and other charges may apply, for which customer is solely responsible. To obtain warranty service, customer must: (i) deliver the product in its original or equivalent packaging; (ii) provide the original or a copy of the sales receipt for the purchase of the product; (iii) provide a detailed description of the problem with or defect in the product; (iv) pay the shipping charges to ship the product to Company, return shipping charges for return shipments outside of the continental United States of America, and expedited return shipping charges; and (v) provide Company with customer's name, address and other contact information.

What laws apply to this Limited Warranty? This Limited Warranty, and all terms and conditions set forth herein, will be governed by the laws of the State of South Dakota and, where applicable, the laws of the United States of America. Any and all disputes arising from this Limited Warranty, the product, customer's use of the product, or otherwise must be venued in the South Dakota Circuit Court sitting in Brookings County, South Dakota. customer agrees to such venue and waives any challenge to such court's jurisdiction based upon lack of personal jurisdiction or inconvenience.

What limitations apply to this Limited Warranty? COMPANY'S RESPONSIBILITY FOR DEFECTS IN MATERIALS AND WORKMANSHIP IS LIMITED SOLELY TO REPAIR, REPLACEMENT OR THE REFUND OF THE PURCHASE PRICE, AS SET FORTH IN THIS LIMITED WARRANTY. THIS WARRANTY IS THE ONLY WARRANTY MADE BY COMPANY. THERE ARE NO IMPLIED WARRANTIES OF MERCHANTABILITY OR FITNESS FOR A PARTICULAR PURPOSE. COMPANY WILL NOT BE LIABLE BEYOND THE REMEDIES SET FORTH IN THIS LIMITED WARRANTY FOR ANY DAMAGES, INCLUDING, BUT NOT LIMITED TO, INCIDENTAL, SPECIAL, EXEMPLARY OR CONSEQUENTIAL DAMAGES, SUCH AS LOST PROFITS OR REVENUES. COMPANY WILL NOT BE LIABLE FOR THE PRODUCT NOT BEING AVAILABLE FOR USE. IN NO INSTANCE WILL COMPANY BE LIABLE TO CUSTOMER OR ANY THIRD PARTY IN AN AMOUNT IN EXCESS OF THE PURCHASE PRICE PAID BY CUSTOMER FOR THE PRODUCT.